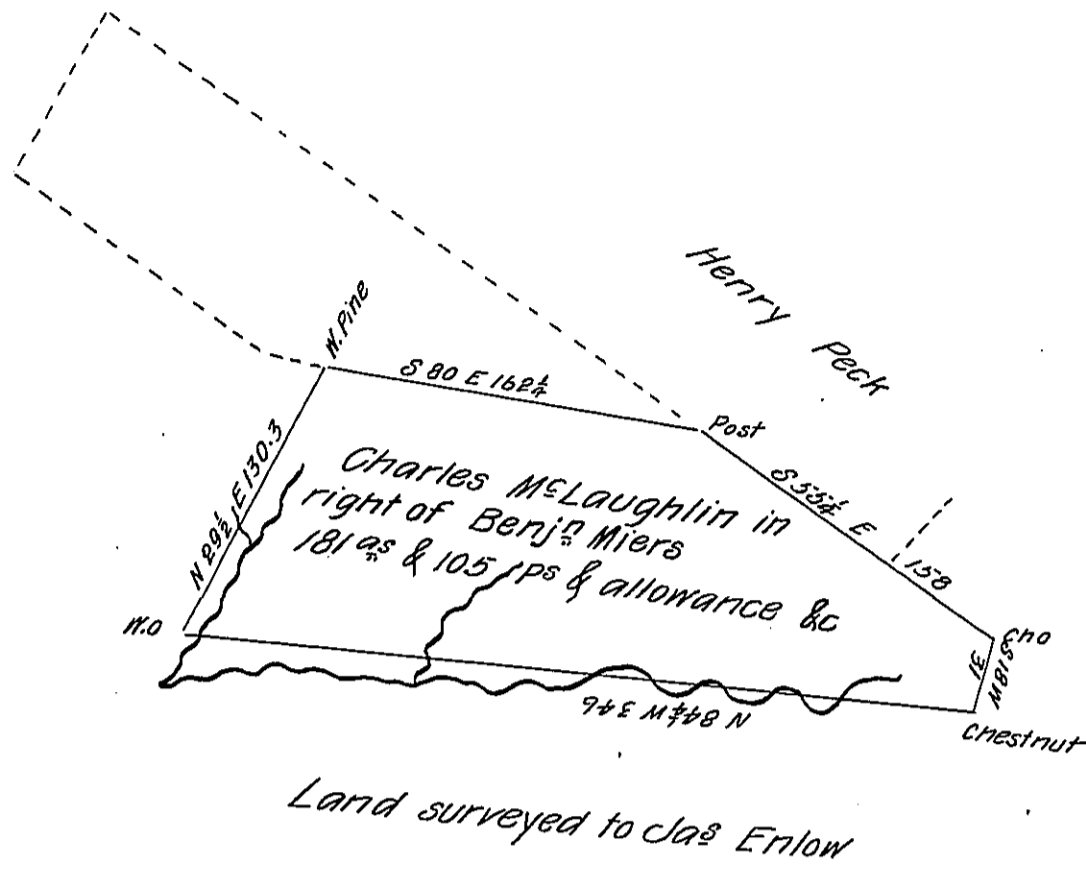


FORM NO. 1.



Situate in Providence Township Bedford County. Containing 181 acres and 105 perches and allowance of Six Pr Cent &c. Being part of a larger Tract originally Surveyed for Benjamin Miers on Warrant dated the 14<sup>th</sup> day of February 1786. Resurveyed for Charles McLaughlin the 20<sup>th</sup> day of December 1815 agreeably to the old Marks on the ground.

P<sup>r</sup> James Piper late D.S.

Examined the 3<sup>rd</sup> day of March 1834.

P<sup>r</sup> me Robert Stuart. D.S.

To Jacob Spangler Esq<sup>r</sup> S. G.

IN TESTIMONY that the above is a copy of the original remaining on file in the Department of Internal Affairs of Pennsylvania, made conformably to an Act of Assembly approved the 16th day of February, 1833, I have hereunto set my Hand and caused the Seal of said Department to be affixed at Harrisburg, this twenty ninth day of January 1906

*Leach D. Brown*  
Secretary of Internal Affairs.